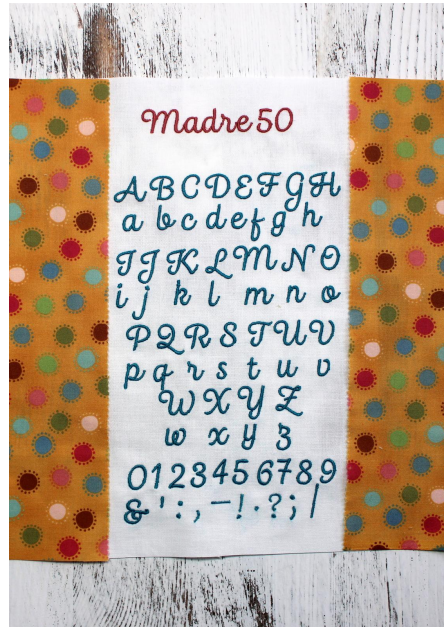


## OMA-Madre 0.50" Font Sample



You have downloaded a sample of this very legible font. It stitches out very smoothly. Each letter starts on the left and ends on the right. It's perfect for personalizing your projects. Comes in 9 machine formats, plus the Bx format for Embrilliance users.

This font was tested with a 75/11 universal Organ needle.

Design Dimensions and stitch counts:

Capital letter A	0.67" w x 0.52" h (16.97 mm w x 13.11 mm h) 319 stitches
Lower case a	0.43" w x 0.34" h (10.92 mm w x 8.63 mm h) 199 stitches

We hope you will enjoy this font. If you have any questions or feedback, please contact [monika@omasplace.com](mailto:monika@omasplace.com)